

JiBC&INCA

**Japan International Beauty Competition 2024.6.21 (Mon.)
Tokyo Bay Area**

Nail Category and Rules, Schedule

Event venue: Urayasu Shimin Plaza Wave101,
4th floor of Aeon Shin-Urayasu Shopping Center, 1-4-1 Irifune, Urayasu-shi, Chiba
千葉県浦安市入船1-4-1イオン新浦安ショッピングセンター4階

(Updated Feb 5, 2024)



Japan International Beauty Competition 2024.6.21 (Mon.)



Registration hours 9:00-10:10

Opening ceremony: 10:15-10:40

Competition time: 10:45-16:00

Closing ceremony: 16:30-19:30

Competition venue Shin-Urayasu Plaza Wave101

〒279-0012 Chiba Prefecture, Urayasu City, Irifune 1-4-1, AEON Shin-Urayasu Shopping Center, 4th Floor

大会会場：〒279-0012 千葉県浦安市入船1-4-1イオン新浦安ショッピングセンター4階

Nail Competition Categories

INCA Nail Category, Group Professional Category

[Live Competition]

- Nail Care (Model)
- Acrylic French Sculpture one hand
- Gel French Sculpture one hand

[Theme Box Competition]

- Hand Painted Art
- Gel painted Art
- Mixed Media Art

INCA Nail Category, Junior Category

[Live Competition]

- Nail Care)(Training Hand)
- Acrylic French Sculpture one hand
- Gel One tone color Sculpture one hand

[Theme Box Competition]

- Hand Painted Art
- Gel painted Art
- Mixed Media Art

JIBC Nail Category, Free Category

[Live Competition]

- Speedy Nail Tip One Color one hand (Freestyle)
- Salon Gel Art Extensions one hand
- Cosplayer Team Relay Chip Overlay

[Theme Box Competition]

- Smartphone Case Deco Art
- Training Hand Single French-nail sculptures

*Professional Nail Care category, care and coloring require a model.

*junior category for care and coloring, participants should use a training hand.

“For the box competition, entries must be submitted by mail by the deadline or brought in person on the day of the competition.

When sending by mail, the cost of postage must be covered by the participant.”

[Address for Box Competition Entries and Submitted Items. “BOX Submission Deadline: Mailed by May 20th,

Address: 3F, 7-4-15 Honcho, Funabashi City, Chiba Prefecture, 273-0005VENUSCOSME Japan

Contact Information: Phone: 050-1350-6432 Email: info@tk-venus.com

Please ensure adherence to the deadline and note that submissions are to be sent to the specified address.

If hand-delivered, June 20th from 2 PM to 7 PM

Competition venue

〒279-0012 Chiba Prefecture, Urayasu City, Irifune 1-4-1, AEON Shin-Urayasu Shopping Center, 4th Floor



Competition General Rules



1. Entry Fee Regulation:

- Fees and completed registration forms are non-refundable under any circumstances.
- Transferring participation rights to another person is not allowed.
- No refunds for withdrawal on the day of the competition.

2. Tournament eligibility:

- Professional Division: Certified instructors or those with over three years of salon work experience. Nail technicians not eligible for the Junior division.
- Junior Division: Nail school students, recent graduates without competition experience, or those with less than three years of salon experience. Participants with competition experience but without top three awards.
- Free Division: Open to all interested participants regardless of previous awards.

3. Rights and Regulations of the Organizing Committee:

- The committee reserves the right to refuse participation for past misconduct, violations, or infringement of honor, human rights, or copyrights.
- All photos and videos taken by the committee or its employees are owned by the committee.
- Participants retain copyright of their entries. However, the organizers have the right to use these entries for promotion, exhibition, and media exposure, including online, without charge. This includes reproduction, publication, display, and distribution. Participants agree not to make claims regarding such uses.

Preparation for Live and Submission Competitions:

- Participants must prepare their own products for use in the competition.
- Necessary items like lights, transformers, extension cords, and table lamps must be arranged by the participants themselves. Some areas of the venue may be dimly lit.
- Participants are responsible for setting up all products, equipment, tools, and materials before the start of the competition.
- The responsibility for arranging models and related matters lies with the participants.
- All participants must present identification at registration, receive a participation certificate, and follow staff instructions for seating.
- Box competition entries must be submitted by the designated date and time. If not mailing, bring them on the day of the event. No refunds for entry fees if submissions are not made.

Pre-Competition Live Judging:

- To prevent pre-competition nail work, models' nails must undergo a pre-competition inspection.
- Disqualification may occur if a participant is found to have worked on the model's nails before the start of the competition or if any other illegal actions are detected.
- For competitions involving training hands, participants must use hands where fingers are not detachable, meaning the hand should be one complete piece from wrist to fingertips.
- Removal of individual fingers from the training hand for competition or submission of such a hand for judging will result in disqualification.

After the Competition:

- Participants must stop working and place their hands on the table when the competition ends. Listen to announcements during judging.
- Touching the model's hand or continuing work after the end results in disqualification.
- No responsibility is taken if a model leaves before judging ends. Models should follow staff instructions.
- Models cannot wear accessories on hands or wrists. Participants are responsible for injuries to the model's hands or nails.
- Using detachable fingers in training hand competitions leads to disqualification. Participants are liable for any damage to the training hand.
- For training hand and box submission competitions, the committee is not responsible for transport damage. Securely pack and fix entries, or deliver personally.

Judging:

- In case of disputes or ties, the committee will make all final decisions.
- Discovery of misconduct may lead to disqualification or revocation of awards.

Japan International Beauty Competition 2024

INCA Nail Care (Professional) – One Hand (Red-Gel), One Hand (French White-Polish) in the Professional Division Nail Care: Both hands, competition duration (50 minutes) *Model required only”

(Right hand: Gel Red , Left hand: Polish White French

■ Competition Regulations

1. During preparation, shape the model's natural nails square (square-off is also acceptable).
2. For preparation, maintain the model's cuticles as they were treated a week prior.
3. Use natural nails, not artificial ones, for preparation (up to two repairs are allowed).
4. Do not set up products other than nail care products on the table (“Use of electric nail machines is prohibited).
5. During competition time, perform nail care (water care) and shape both hands' nails round (no dry care or nail machine care).
6. Use gel for red and white polish, manicure for French coloring.
7. Apply French coloring with white polish on the left hand, finishing with a top coat (0.3~0.5cm) (no oil at the finish). Use white polish without pearls. Only natural skin color, nude pink or nude beige ordinary polish (manicure) allowed.
8. Apply full coat coloring with red gel on the right hand. Both container and bottle types of gel are acceptable. Finish with top gel (no oil at the finish). Wipe off uncured gel completely.
9. Judging is behind curtains. Models must follow the venue announcer's instructions.

*Water Care means This can include soaking the nails in water, using water-based products, or performing treatments.

■ Judging Points

1. Pre-treatment condition (cuticles, shape)
2. Condition around the cuticles
3. Length
4. Shape
5. Condition of the cuticles
6. Overall balance
7. Finish condition
8. State of the completed coloring
9. Surface condition
10. Product control

■ Disqualification Criteria

1. Disqualification for using a training hand or if the model does not participate.
2. Disqualification for using products other than those specified or for not performing water care.
3. Disqualification for time overruns or if uncured gel remains.

Japan International Beauty Competition 2024

INCA Nail Care (Junior) – One Hand (Red-Gel), One Hand (French White-Polish) in the Junior Division Nail Care: Both hands using a training hand, competition duration (45 minutes).*Training Hand use only

■ Competition Regulations:

1. Attach nail tips to the training hand in a square shape during preparation (square-off allowed, no surface sanding).
2. Use non-detachable fingers for the training hand.
3. Only nail care products allowed on the table (“Use of electric nail machines is prohibited.”).
4. Shape the nails (pre-attached tips) round using a nail file during competition time (no Water Care performed, No need to do care).
5. Use gel nails for red and white nailpolish/manicure for French coloring.
6. Apply French coloring with white polish on the left hand and finish with a top coat (0.3~0.5cm); no oil use allowed for finishing. Use white polish without pearls, and only natural skin color in nude pink or nude beige is allowed.
7. Prepare the right hand by sanding, apply base gel, and perform full gel coloring with red gel. Both container and bottle types of gel are acceptable. Finish with top gel; no oil use allowed for finishing. Wipe off uncured gel completely.
8. Submit according to announcements and staff instructions during judging.

*Water Care means This can include soaking the nails in water, using water-based products, or performing treatments that prioritize the hydration

■ Judging Points

1. Pre-treatment condition (cuticles, shape)
2. Condition around the cuticles
3. Length
4. Shape
5. Condition of the cuticles
6. Overall balance
7. Finish condition
8. State of the completed coloring
9. Surface condition
10. Product control

■ Disqualification Criteria

1. Disqualification will occur if participating with a live model. Only use a training hand.
2. Disqualification for using products other than those specified.
3. Disqualification for time overruns or if uncured gel remains.

Japan International Beauty Competition 2024

INCA Acrylic PINK&WHITE French Sculpture – Professional, Junior (common for both Pro and Junior)

Acrylic French Sculpture: One hand, competition time (75 minutes) using a Training hand only.

■ Competition Regulations

1. Prepare the training hand nails pre-competition with the free edge around 1mm or less and round in shape.
Points deducted if the free edge exceeds 1mm. Either hand is acceptable.
2. Pre-competition, sanding and primer application are allowed (no nail form attachment or pre-cutting).
3. Use materials like acrylic white powder, pink powder, cover pink powder, clear powder, and acrylic liquid.
4. Extend the nail ensuring equal lengths from the cuticle center to the smile line center and from the smile line top end to the free edge.
5. Finish in a square style.
6. Use a shiner for a glossy finish.
7. Keep thickness below 0.5mm.
8. Create a uniform C-curve between 30-40%.
9. Use backfilling, pinch sticks, clips, tweezers, staplers, scissors, oil, and acetone.
10. Make all five smile lines the same (depth, symmetry).
11. Use sprays, finger bowls, and wet wipes for finishing.
12. Extend the length using forms, liquid, and acrylic powder on one hand (five fingers) of the hand.
13. Submit according to venue announcements and staff instructions.

■ Judging Points

1. C-curve
2. Product control
3. High point
4. Gloss and finish
5. Length
6. Shape
7. Cuticle line
8. Smile line
9. Convex and concave
10. Thickness
11. Overall finish
12. Sidewalls and side straight
13. Surface condition

■ Disqualification Criteria

1. Disqualification for using a detachable-finger training hand or participating with a live model.
2. Using products other than those specified.
3. Exceeding the allotted time.



Japan International Beauty Competition 2024

INCA Gel French Sculpture - Professional Division

Gel French Sculpture: One hand training hand, competition time (75 minutes) using a Training hand only.

■ Competition Regulations

1. Pre-competition, prepare the training hand with the free edge length approximately 1mm or less and shaped round.
Deductions for free edges over 1mm; choice of hand is free.
2. Before starting, sanding and primer application are allowed (no pre-preparation of nail forms, cut during competition time).
3. Only use clear gel, white gel, pink gel, cover pink, and UV or LED light for gel products.
4. Extend nails ensuring equal lengths from the cuticle center to the smile line center and the smile line top end to the free edge ; create using nail forms (no half-tip nails).
5. Final shape must be square.
6. Cannot use a shiner for finishing.
7. Finish with top gel and wipe off any uncured gel.
8. Thickness should be below 0.5mm.
9. Create a uniform C-curve between 30-40%.
10. Allowed to use backfilling, pinch sticks, clips, tweezers, staplers, scissors, oil, acetone.
11. Make all five smile lines the same (symmetrical).
12. Spray, finger bowl, and wet tissue may be used for finishing.
13. Apply French on one hand (five fingers) of the hand.
14. Submit according to venue announcements and staff instructions.

■ Judging Points

1. C-curve
2. Product control
3. High point
4. Gloss and finish quality
5. Length
6. Styling
7. Cuticle line
8. Smile line
9. Convex and concave shapes
10. Thickness
11. Overall aesthetic
12. Sidewalls and side straightness
13. Surface condition

■ Disqualification Criteria

1. Disqualification for using a detachable-finger training hand or participating with a live model.
2. Disqualification for using products other than those specified or using nail tips.
3. Disqualification for exceeding the time limit.



Japan International Beauty Competition 2024

INCA Gel One-Tone Sculpture Junior - Junior Division

“Gel One-Tone Sculpture: One hand training hand, competition time (75 minutes). using a Training hand only.”

■ Competition Regulations

1. Before starting, the nails on the hand should have free edges about 1mm or less in length and be round.
Points deducted if the free edge of the natural nails exceeds 1mm.
2. Sanding and primer application are allowed before the start, but pre-setting nail forms is not. Forms should be cut during competition time.
3. Only use “Clear Gel” for the gel material. Use only UV or LED light for gel nail products.
4. Extend the free edge using clear gel to about 5mm-1cm (no color gel or other colors allowed).
5. The final shape must be square.
6. Cannot use a shiner for finishing.
7. Finish with top gel; uncured gel leads to disqualification.
8. Thickness should be below 0.5mm.
9. Create a uniform C-curve between 30-40%.
10. Pinch sticks, clips, tweezers, oil, and staplers are allowed.
11. Use spray, finger bowl, and wet tissue for finishing.
12. Use gel only to extend one hand (5 fingers); no tips allowed.
13. Submit according to venue announcements and staff instructions.



■ Judging Points

1. C-curve
2. Product control
3. High point
4. Length
5. Styling
6. Cuticle line
7. Surface smoothness and texture
8. Thickness
9. Overall finish
10. Sidewalls and side straightness
11. Delicacy of the art
12. Art color and originality

■ Disqualification Criteria

1. Disqualification for using a detachable-finger training hand or participating with a live model.
2. Using products other than those specified, finishing with color gel, or using nail tips.
3. Exceeding the time limit.

Japan International Beauty Competition 2024

JiBC Speedy Nail Tip One Color - Free Division

Training Hand: One hand, competition time (25 minutes). *using a Training hand only.

Competitors will attach full well tips to the nails and compete on creating a beautiful form and finishing with white coloring in a short amount of time.”

■ Competition Regulations

1. Pre-competition, choose any hand for training with non-detachable fingers; the free edge length of the nail tips on the training hand is up to the participant.
2. Use gel nail products and UV or LED lights, including handheld types.
3. Attach full well tips at the cuticle for lengthening; final shape is participant's choice with 1cm-2cm free edge length. No half tips; manufacturer choice is free.
4. Shiner not allowed for finishing.
5. Finish with top gel; uncured gel leads to disqualification.
6. Thickness should be below 0.5mm.
7. Ensure overall form, sideline, arch from cuticle to high point, and tip are beautifully finished.
8. Allowed to use back files, clips, tweezers, oil; manual filing only, no machines.
9. After attaching tips, apply the same matte white color to all 5 nails and finish with top coat (no pearl or glitter colors).
10. Use spray, finger bowl, wet tissue for finishing.
11. Submit according to venue announcements and staff instructions.

■ Judging Points

1. Smoothness of the surface
2. Product control
3. High point
4. Glossy finish
5. Consistency in length between 1cm and 2cm
6. Styling
7. Cuticle line
8. Bubble formation
9. Thickness (below 0.5mm)
10. Overall finish
11. Sidewalls
12. Completion level (front, side straightness, fit of the tip)

■ Disqualification Criteria

1. Disqualification for using a hand with detachable fingers, using a nail machine, or participating with a live model.
2. Disqualification for attaching anything other than full well tips.
3. Disqualification for exceeding the time limit, leaving uncured gel, finishing with a color other than matte white, or not applying matte white on all five nails.

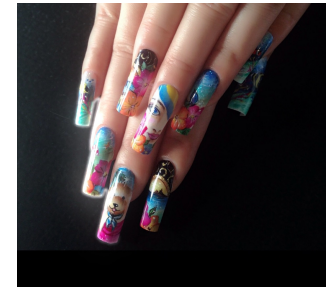
Japan International Beauty Competition 2024

JiBC Salon Style Gel Art Extension – FreeDivision

Use one hand of the training hand with five fingers, competition time (45 minutes). using a Training hand only.
Pre-extend the length of nails on a training hand and complete gel art live on the day of the competition.

■ Competition Regulations:

1. Pre-Competition Preparation: Attach base tips to the training hand and pre-create extensions. Free choice of hand and extension material, but no pre-coloring or colored tips allowed.
2. Live Competition: Start with sanding, apply base gel, design with color gel, and finish with top gel. Disqualification for uncured gel.
3. Art Theme: Free choice, but no famous characters or logos.
4. Styling: Freedom in the finished form's styling.
5. Art Materials: Only gel materials, certain types allowed.
Prohibited materials for the competition include acrylic powder, acrylic paint, airbrushing (including air gel), watercolor paints, mirror powder, nail stickers, glitter powder, seashells, homemade template sheets, stamps, and rhinestones.
These materials must not be used in the competition.
6. Thickness: Maintain below 1mm.
7. Finishing: Use of filing, oil, finger bowls, wet tissues allowed.
8. Judging: Follow venue announcements and staff instructions.



■ the judging points for the competition:

1. Surface texture (smoothness or roughness)
2. Control of products used
3. High point of the nail design
4. Gloss and quality of finish
5. Length of the nails
6. Overall styling of the nails
7. Quality of the cuticle line
8. Thickness of the nails
9. Delicacy of the nail art
10. Color balance in the nail art
11. Originality of the design
12. Overall finish and presentation of the nails

■ Disqualification Criteria

1. Disqualification for using a hand with detachable fingers, participating with a live model, or not working on all five fingers of one hand.
2. Disqualification for not applying base gel or using materials other than gel for art.
3. Disqualification for pre-applying color or lengthening with colored tips.

Japan International Beauty Competition 2024

"Newly added by popular demand!
Revised on Feb 5, 2024."

<Cosplayer Relay Competition: Chip Overlay, One-Tone Acrylic Sculpture - Free Category, JiBC>

* Model Competition: 5 fingers on one hand, (60minutes)" "One team: 3 members.+ model"

■ Competition Rules - Real (Model) Competition -

1. Before the start, the model's natural nails should be 1mm or shorter (free edge length) and styled round.
2. Before starting, choose chip size and apply primer (chip blending not allowed).
3. Only acrylic materials are to be used.
4. Extend the nails so that the length from the cuticle center to the yellow line center and from the yellow line center to the free edge end is either 1:1/2 or 1:1 (length between 0.6cm to 1.2cm).
 1. Only use natural chips (clear, colored, French chips, and nail form not allowed.)
6. The completed shape must be square.
7. Thickness should be less than 1mm.
8. C-curve should be uniform at 30-40%.
9. Use a gloss buffer for a shiny finish.
10. Use of under file, drill machine, pinch stick, clip, tweezers, oil, acetone, and clipper is allowed.
11. Use of spray, finger bowl, and wet tissue is allowed for finishing.
12. Use natural chip and one type of overlay material (one-tone) on the model's one hand (5 fingers) to extend the length.
 1. Cosplay is free. Teamwork, excitement, and performance also count towards the score.

- First participant does sanding, chip blending, and length adjustment.
- Second participant does application.
- Third participant does filing and high shine finishing."

■ Judging Criteria:

1. C-Curve
2. Product Control
3. High Point
4. Gloss and Finish
5. Length
6. Shape
7. Cuticle Line
8. Chip Adhesion
9. Convex, Concave
10. Thickness
11. Overall Finish
12. Side Straightness
13. Surface Condition
14. Costume Consistency
15. Costume Uniqueness
16. Teamwork and Excitement



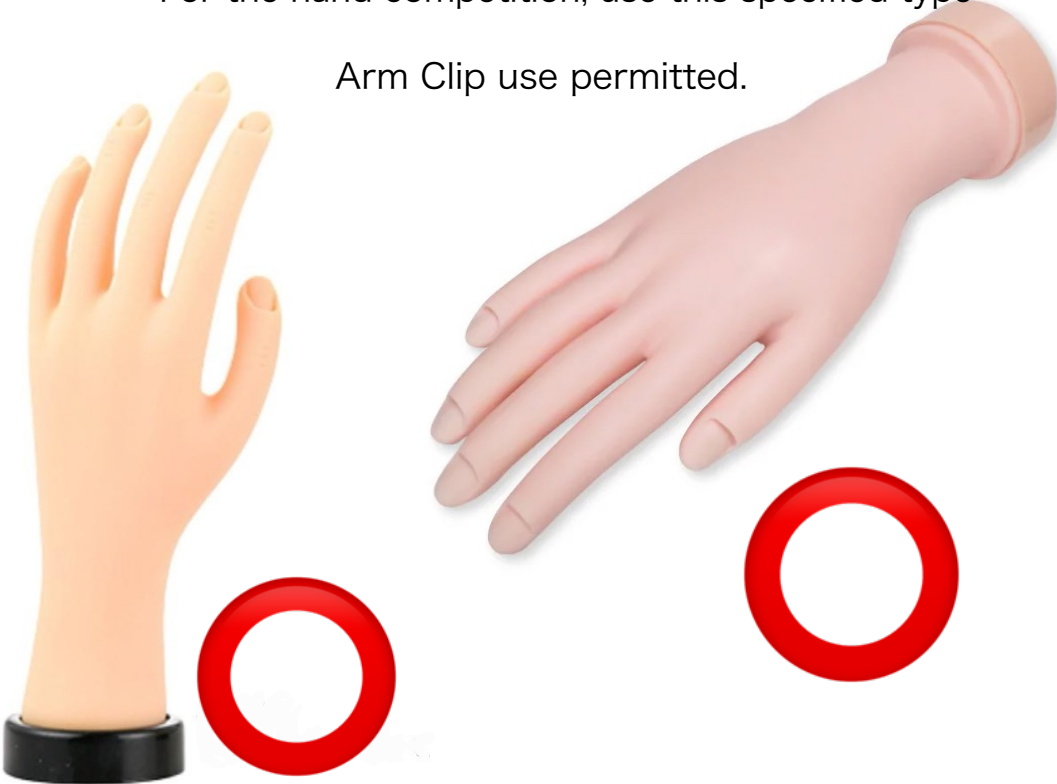
Prohibited Hands for Use

Detachable finger types are prohibited



For the hand competition, use this specified type

Arm Clip use permitted.



Japan International Beauty Competition 2024

Nail Contest Rules, Disqualification Criteria



1. Using inappropriate models or training hands.
2. Exceeding allotted time.
3. Tampering with the model's hand or artwork post-competition.
4. Communicating with judges during evaluation.
5. Leaving the seat after pre-competition checks.
6. Uninformed exit from the venue.
7. Non-compliance with guidelines.
8. Using detachable-finger training hands.
9. Utilizing unauthorized materials.

Japan International Beauty Competition 2024

Art Tip Box (Exhibit Piece)

INCA (INBOX). ACRYLIC HAND PAINTED NAIL ART (Common for both Professionals and Juniors) -

*** Any contestant who does not follow the rules and regulations will automatically be disqualified or point deduction.***

1. Theme is free.
2. There is no decoration on the tips box background.
3. Tip box background is white paper (W:14.5cm, L: 10.5cm, H: 2cm)
4. The height of the tip box should be less than 2cm.
5. Shape are available in square, round or oval.
6. Five nail tips in one complete set, different tips size is required.
7. Not allow to create own tip (only nail tips sold can be used).
8. Tip length is no longer than 9cm, side is no wider than 2cm.
9. Design using Acrylic Paint only.
10. Each nail tip are not connected with each other, must be remain individual.
11. No accessories are allowed for decoration.
12. Mail by May 20th. If bringing in person, deliver between 2:00PM-7 : 00PM on June 20th.
13. Please collect your Artwork by 4:00pm~7:00pm along with your receipt of collection.
14. The art box is prepared by contestants (Art tip box is not provided by the Organizer).

■ Judging Categories:

1. Originality
2. Color
3. Visual Interest
4. Combination
5. Complexity
6. Workmanship
7. Design
8. Difficulty
9. Detail
10. Overall Impression

Japan International Beauty Competition 2024

Art Tip Box (Exhibit Piece)

INCA (INBOX). GEL HAND PAINTED NAIL ART (Common for both Professionals and Juniors) -

*** Any contestant who does not follow the rules and regulations will automatically be disqualified or point deduction. * **

1. Theme is free.
2. There is no decoration on the tip box background.
3. Tip box background is white paper (W:14.5cm, L: 10.5cm, H: 2cm)
4. The height of the tip box should be less than 2cm.
5. Shape are available in square, round or oval.
6. Five nail tips in one complete set, different tips size is required.
7. Not allow to create own to (only no tos sold con be used).
8. Tip length is no longer than 9cm, side is no wider than 2cm.
9. Design using Gel Paint only.
- 10 Each nail tip are not connected with each other, must be remain individual.
11. No ocesones ora oowndter cacorotion
12. Mail by May 20th. If bringing in person, deliver between 2:00PM~7:00PM on June 20th.
- 13 Please collect your Artwork by 4:00pm~7:00pm along with your receipt of collection.
14. The ort box is prepared by contestants (Art tip box is not provided by the Organizer).

■ Judging Categories:

1. Originality
2. Color
3. Visual Interest
4. Combination
5. Complexity
6. Workmanship
7. Design
8. Difficulty
9. Detail
10. Overall Impression

Japan International Beauty Competition 2024

Art Tip Box (Exhibit Piece)

Mixed Media Art Category INCA (Common for both Professionals and Juniors) -

*** Any contestant who does not follow the rules and regulations will automatically be disqualified or point deduction.***

- 1.Theme is free.
- 2.There is no decoration on the tips box background.
- 3.Tip box background is white paper (W: 14.5cm, L: 10.5cm, H: 2cm)
- 4.The height of the tip box should be less than 2 cm.
- 5.Shape are available in square, round of oval.
- 6.Five nail tips in one complete set, different tips size is required.
- 7.Not allow to create own tip (only nail tips sold can be used).
- 8.Tip length is no longer than 9cm, side is no wider than 2cm.
- 9.No higher than 0.5cm height and do not exceed 0.5cm each side from the nail surface.
- 10.Each nail tip are not connected with each other, must be remain individual.
- 11.you must use at least three type of the nail art materials,
- 12.No accessories are allowed for decoration.
13. Mail by May 20th. If bringing in person, deliver between 2:00PM-7 : 000PM on June 20th.
- 14.Please collect your Mix Media Nail Art by 4:00pm-7:00 along with your receipt of collection.
- 15.The art box is prepared by contestants (Art tip box is not provided by the Organizer)



■ Judging Categories:

- 1.Originality
- 2.Color
- 3.Visual Interest
- 4.Combination
- 5.Complexity
6. Workmanship
7. Design
8. Difficulty
- 9.Detail
10. Overall Impression

Japan International Beauty Competition 2024

“Smartphone Case Deco Art Category JiBC Free Division.”

For the Smartphone Case Deco Art Category in the JiBC Free Division

■ Competition Regulations

1. Use a clear smartphone case (any brand) and decorate it with self-made parts or art, then submit in a clear box.
2. Free to paint the case using nail materials, acrylics, gels, airbrushing, etc. Stones, foils, metallic powders, glitters, and other nail materials are allowed.
3. Submit in a clear box, self-prepared, fitting the case. Box standard: up to 10cm wide, 18cm tall, 5cm high.
4. Use white paper for the background of the submission box; no decoration on the box.
5. Free to use acrylic, 3D gel, gel color, acrylic paint, airbrush for the art design.
6. Label the box with your name on the back.
7. Write the theme title in Japanese and English on paper and submit with the artwork.
8. Mail by May 20th. If bringing in person, deliver between 2:00PM~7 : 00 PM on June 20th.
9. Please collect your Mix Media Nail Art by 4:00pm~7:00pm along with your receipt of collection.



Specifics for the case:

1. Height from the case surface is free, but must fit in the box.
2. Use at least three types of nail art materials.
3. No pre-made sculptural elements, parts, resin parts, or paper clay; famous anime characters are prohibited.

■ the judging points for the competition:

1. Originality
2. Color Harmony
3. Visual Excellence
4. Balance
5. Complexity
6. Technical Skill
7. Design
8. Difficulty
9. Delicate Expression
10. Overall Finish

■ Disqualification Criteria

1. Exceeding the specified box size.
2. Not submitting the theme title on paper or writing one's name on the artwork.
3. Failing to submit the work within the designated date and time.

Japan International Beauty Competition 2024

JiBC Acrylic French Sculpture, One Hand (Training Hand), Box Free Division

"This is a competition where you create the artwork at home and submit it by mail or on the day of the event."

■ Competition Regulations

1. Prepare one training hand (left or right, user's choice), ensuring the fingers are not detachable.
2. Use acrylic materials like white, pink, cover pink, clear powder, and liquid.
3. Extend the nails to ensure equal lengths from the cuticle center to the smile line center and from the smile line end to the free edge.
4. Finish in a square style.
5. Use a shiner for a glossy finish.
6. Keep thickness below 0.5mm.
7. Create a uniform C-curve between 30-40%.
8. Allowed to use back filing, pinch sticks, clips, tweezers, oil, acetone.
9. Make all five smile lines the same (depth, symmetry).
10. Mail by May 20th. If bringing in person, deliver between 2-7 PM on June 20th.
11. Please collect your training hand by 4:00pm~7:00pm along with your receipt of collection.



■ the judging points for the competition:

1. C-curve
2. Control of products used
3. High point of the nail design
4. Gloss and quality of finish
5. Length of the nails
6. Nail shape
7. Quality of the cuticle line
8. Smile line appearance
9. Convex and concave shapes
10. Thickness of the nails
11. Overall finish
12. Straightness of the sides
13. Surface finish quality

■ Instructions

1. For submissions via mail, ensure the hand is well-packed to prevent damage, as the competition won't be liable for any damage upon arrival. Prepare your own packaging materials in Box. Clearly write your name on the packing materials, not directly on the training hand.
 - We are not responsible for compensation or liability for lost items if the package does not clearly indicate the name.
 - We do not accept collect shipping for the postage costs at the time of submission.
 - After the event, those in attendance must take their belongings with them.
2. Use a type of hand that does not have detachable fingers.
3. Failure to submit by the designated time will result in disqualification.

Japan International Beauty Competition 2024



Regarding Box artworks and submission pieces, here are some important notes:

1. Packaging and Identification: Ensure your artwork is well-packaged to prevent damage. Include your name clearly on the package. We are not liable for lost items if the package does not have your name.
2. Shipping Responsibilities: You are responsible for all shipping and packaging costs. We do not accept collect or cash on delivery shipments.
3. Submission Deadline: Works must be submitted by the specified deadline. Late submissions will lead to disqualification.
4. Return of Artworks: After the event, artworks will be returned to the participants. However, we are not responsible for any damage or loss during the return shipping. Artworks will be sent back cash on delivery.
5. Loss and Damage During Event: While we take care to safeguard the artworks, we are not liable for any loss, damage, or deterioration that may occur during the event.
6. Mail by May 20th. If bringing in person, deliver between Competition venue 2-7 PM on June 20th

In the case of postal submission

[INBOX, Submission Address for Hand Artworks] *Must arrive at headquarters by Monday, 5/20

〒273-0005

Chiba Prefecture, Funabashi City, Honcho 7-4-15 3F

Addressed to VENUSCOSME Japan

(TEL: 050-1350-6432 / E-mail: info@tk-venus.com)

*Please specify "JIBC Tournament Submission Work" in the item description.

[Bring entries to the venue on June 20 (Thursday). No submissions accepted on event day]

If hand-delivered, June 20th from 2 PM to 7 PM

Competition venue

Chiba Prefecture, Urayasu City, Irifune 1-4-1, AEON Shin-Urayasu Shopping Center, 4th Floor